



**119 Linton Road, Loose, Maidstone, Kent, ME15 0AL**  
**Offers In Excess Of £375,000**



THREE BEDROOM PERIOD PROPERTY WITH A DOUBLE GARAGE BACKING ONTO RECENTLY PLANTED FIELDS WITHIN WALKING DISTANCE OF POPULAR SCHOOLS. Located in a convenient position this fabulous family home is within walking distance of the Loose Valley Conservation Area where you are served with picturesque walks through woodlands with babbling brooks, ponds and Crisbrook Meadow. Local amenities include the Chequers Inn pub, Ofsted rated 'Outstanding' Loose Primary School, as well as a Post Office. For the commuter, Staplehurst or Marden Stations are only 10 minute drive away, with frequent services to London Bridge, Waterloo and Charing Cross. This charming period property offers three bedrooms, including a main bedroom, accompanied by a lounge, dining room, and a well-appointed kitchen. The ground floor features a convenient bathroom, while the first floor hosts three bedrooms and a separate W/C. Outside, a spacious driveway extends alongside the property leading to a detached double garage. The property offers scenic views overlooking recently planted fruit tree fields, providing a tranquil backdrop for relaxation and enjoyment. Do not delay and contact Page and Wells Loose Office to book your viewing



## GROUND FLOOR

### Entrance hall

Lounge 12'11" x 12'0" (3.96m x 3.67m)

Dining Room 10'9" x 10'0" (3.30m x 3.07m)

Kitchen 8'0" x 7'11" (2.46m x 2.42m)

### Bathroom

## FIRST FLOOR

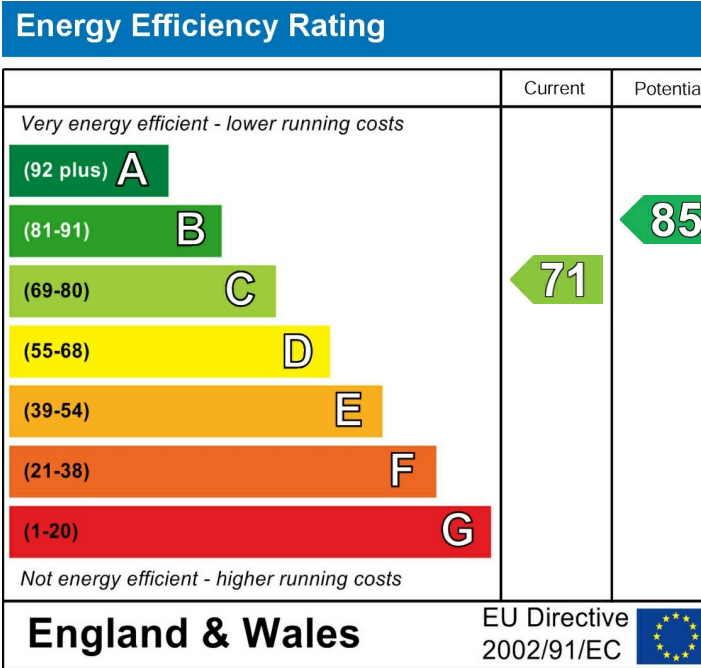
Bedroom 1 12'0" x 10'11" (3.67m x 3.35m)

Bedroom 2 11'0" x 9'10" (3.36m x 3.00m)

Bedroom 3 8'0" x 7'11" (2.44m x 2.43m)

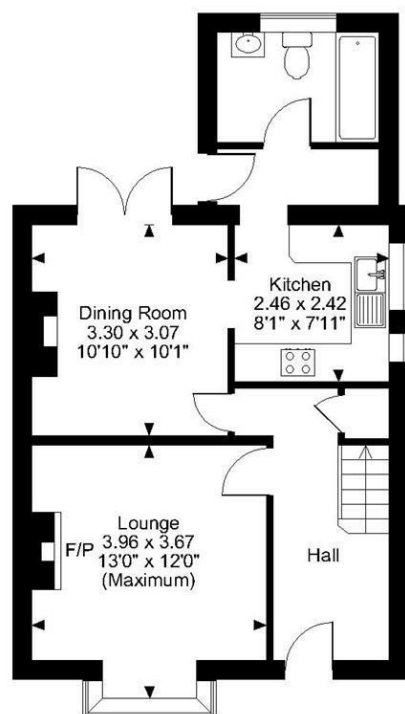
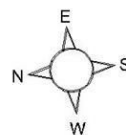
## EXTERNALLY

Double Garage 19'8" x 17'4" (6.00m x 5.30m)

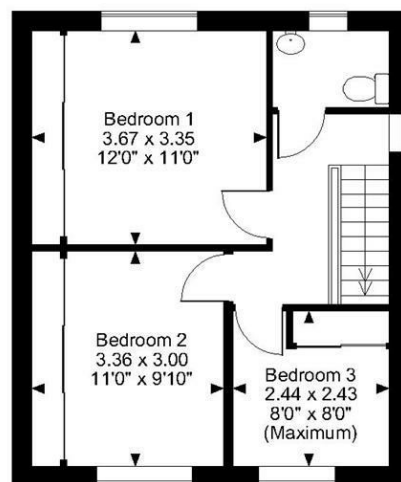




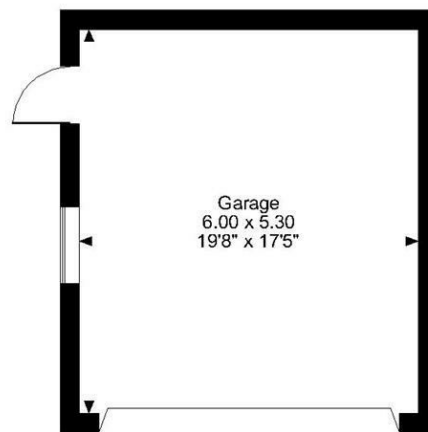
**Linton Road, Loose, Maidstone**  
**Approximate Gross Internal Area**  
**Main House = 904 Sq Ft/84 Sq M**  
**Garage = 342 Sq Ft/32 Sq M**  
**Total = 1246 Sq Ft/116 Sq M**



**Ground Floor**



**First Floor**



**FOR ILLUSTRATIVE PURPOSES ONLY - NOT TO SCALE**

The position & size of doors, windows, appliances and other features are approximate only.  
 © ehouse. Unauthorised reproduction prohibited. Drawing ref. dig/8585903/LCO

